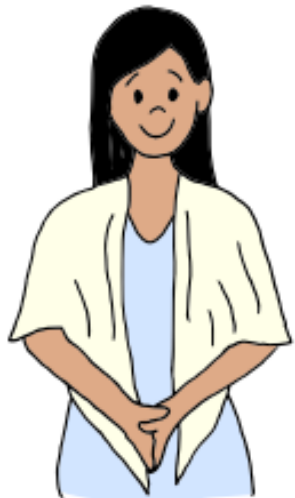


# WH Sentence Builder

Use this resource as a visual support to help your student:

- answer WH-questions accurately;
- increase the length and complexity of their sentences;
- remember to say the little grammatical words like “is,” or;
- whatever else you can think of!

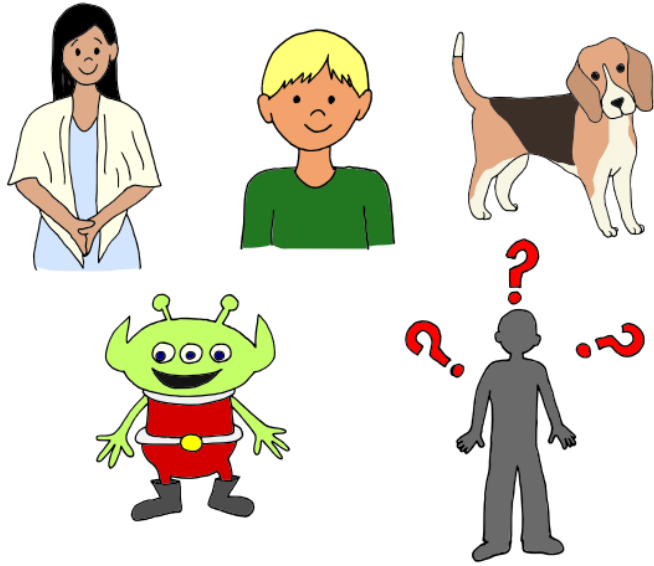
# who?



# is doing what?



# who?



# is doing what?

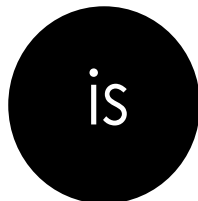


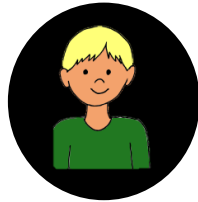
is





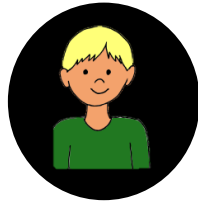
The teacher is reading a book.

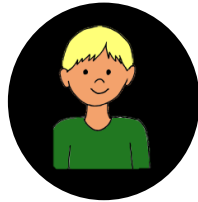




is







are

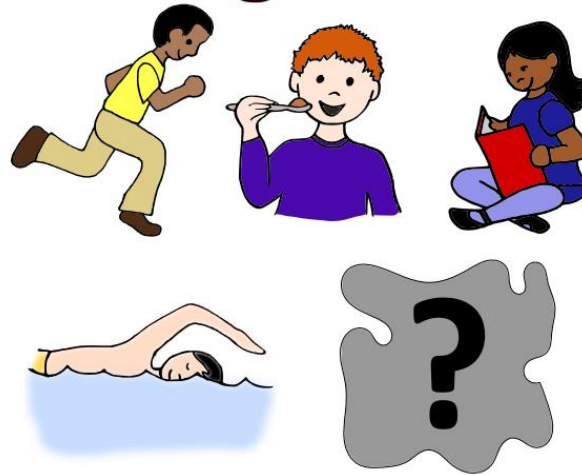
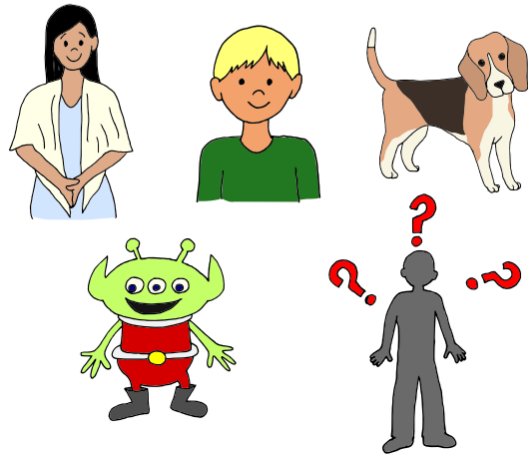




# where?



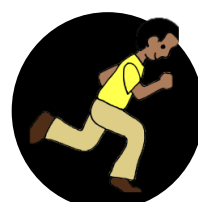
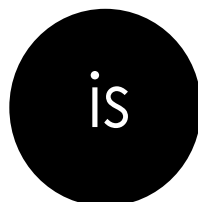
who? is doing what?



where?

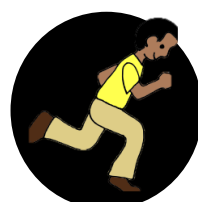
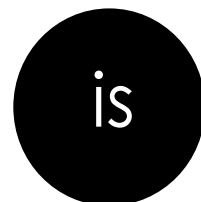
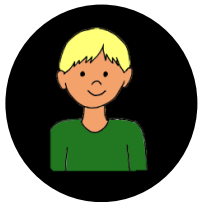


The teacher is reading a book on the carpet.





The teacher is reading a book on the carpet.





is





am

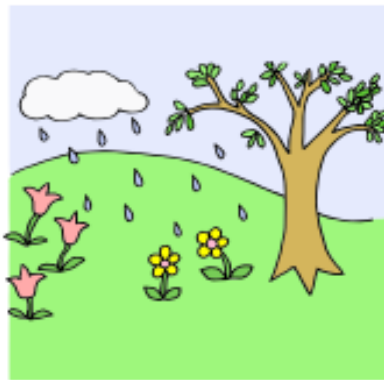
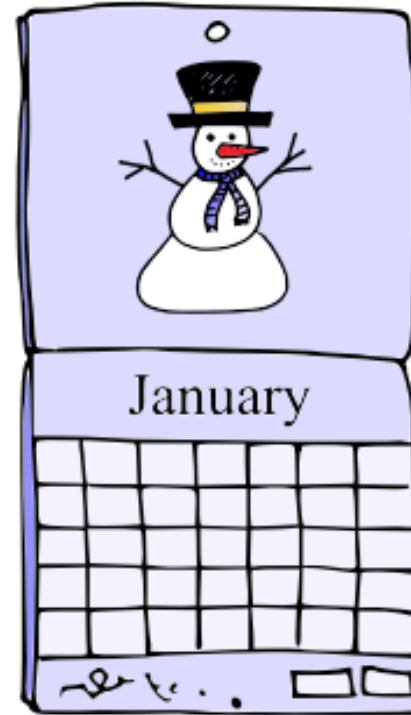




are



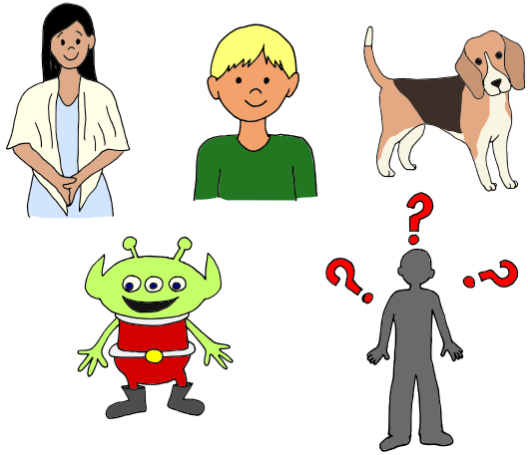
# when?



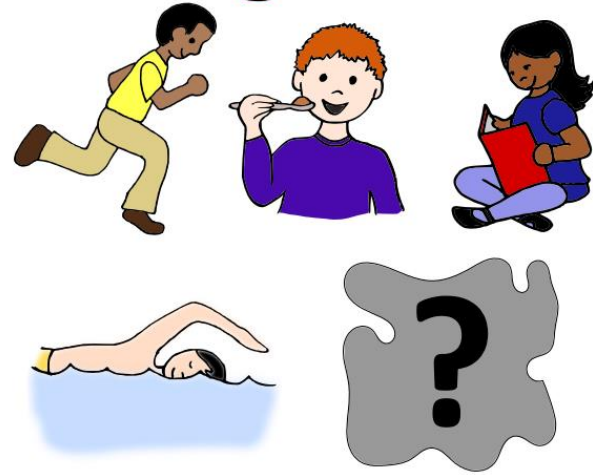
2020

Sunday	Monday	Tuesday	Wednesday	Thursday	Friday	Saturday
	★					

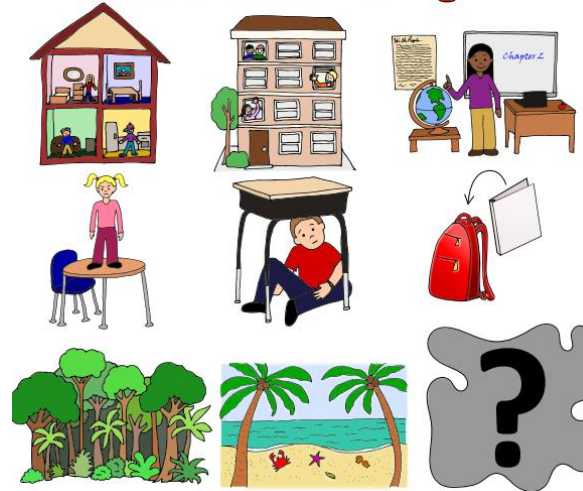
# who?



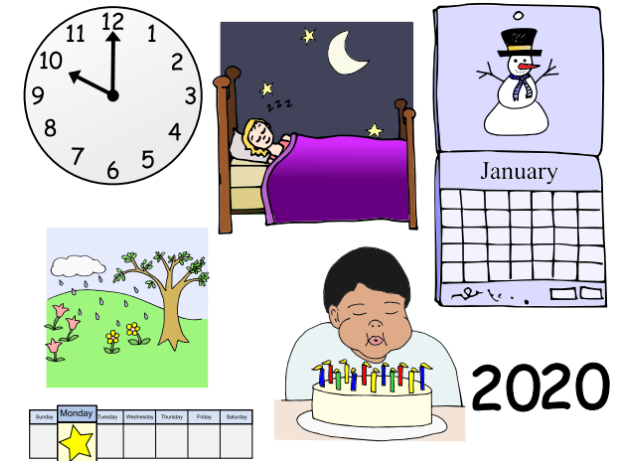
# is doing what?



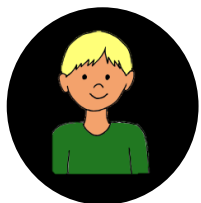
# where?



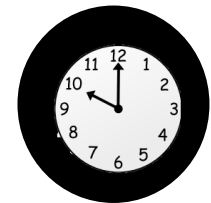
# when?



The teacher is reading a book on the carpet in the morning.



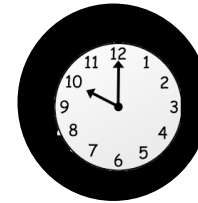
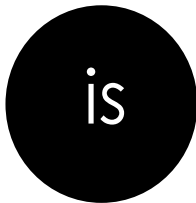
is







The teacher is reading a book on the carpet in the morning.





is





am





are

